

# BT MESH

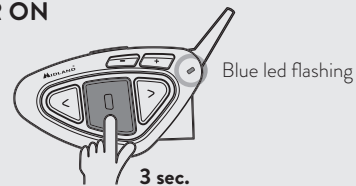
## QUICK GUIDE



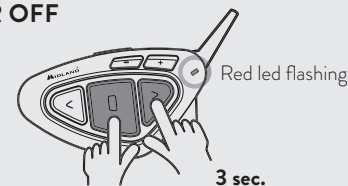
**MIDLAND**

To download the complete manual visit [midlandeurope.com](http://midlandeurope.com)

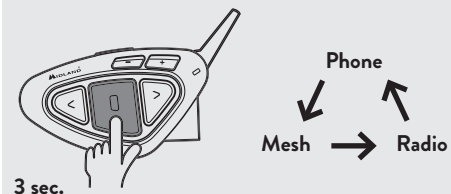
### POWER ON



### POWER OFF



### OPERATIVE MODES



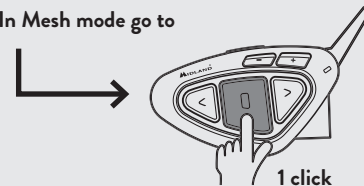
To toggle from one mode to another one, press the **Middle button** for 3 seconds.

**Mesh mode:** to activate Mesh or Bluetooth communication  
**Phone mode:** to make/answer calls via Bluetooth. The phone mode is possible only if the mobile phone is paired to BTMESH.

**FM radio mode:** to seek and to listen to radio stations. 6 memories available.

### TO START A MESH COMMUNICATION

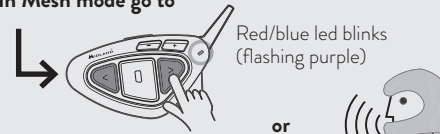
In Mesh mode go to



1 click on the Middle button enables/disables the Mesh feature to all devices available within the range.

### TO MAKE AN INTERCOM CALL

In Mesh mode go to

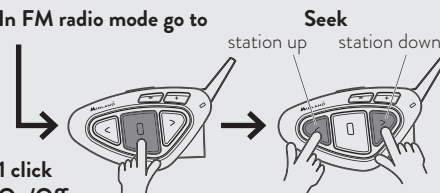


Paired to the Forward or Backward button.

or  
 Say "Hello!" paired to the Backward button.

### LISTENING TO FM RADIO

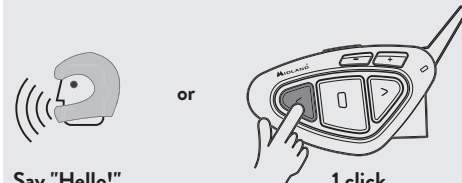
In FM radio mode go to



1 click On/Off

To save the station, press Forward and Backward together for 3 seconds.

### TO RECEIVE A PHONE CALL

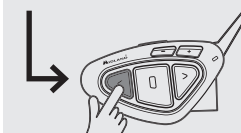


Say "Hello!"

1 click on the Forward or Backward button.

### TO MAKE A CALL

In Phone mode

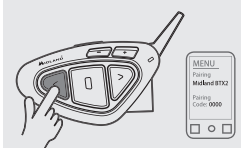


After pairing your phone to BTMESH, switch to Phone mode. All three buttons work in Phone mode.

**Voice call:** if your phone supports voice calls press Forward button, say the name of the desired contact to call.

**Redial:** Long press Forward button.  
**Speed dial:** Save the number using BT UPDATER. Then press Forward for 7 seconds.

### TO END A CALL



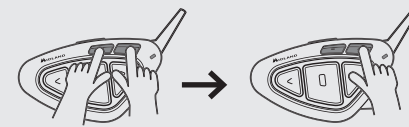
Press Forward button or press End on your mobile phone

### SETUP MESH COMMUNICATION

Public group mode

- No pairing required
- BTMESH members can choose their own ID between 1 and 10, so they won't overlap
- Unlimited users in Guest mode (only listening). BTMESH are set by default to Public group.

**BTMESH single:** the unit is set by default as member 1;  
**BTMESH twin:** the units are set by default as members 2 and 3.



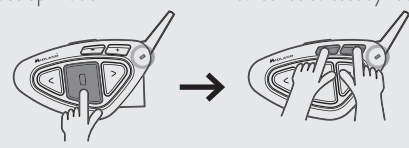
**Change ID number:** press at the same time. Voice will tell you current ID number.

**Press VOL+ or VOL-** within 5 seconds to change the ID. Each member must have his own ID, no common numbers are possible.

### BLUETOOTH PAIRING RESET

Power OFF

Red led lights up Set up mode



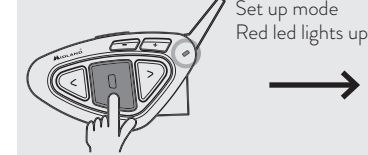
Press 7 seconds

**Press simultaneously** Blue led lights up and then switches to steady red.

**Middle button 2 click to exit Setup mode.**

### PAIRING TO ANOTHER MIDLAND BT UNIT (BTX1, BTX2, BT NEXT)

Power OFF



Press and hold 7 sec.

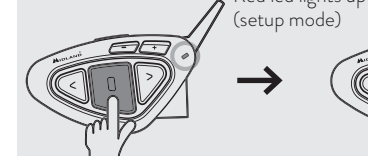


Press Forward or Backward 3 sec.

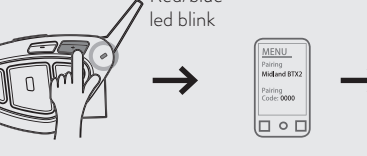
Make the same on the other unit. When pairing is complete, the units will have blue light on 1 sec, then go back to setup mode (red light always on).

### PAIRING A PHONE

Power OFF

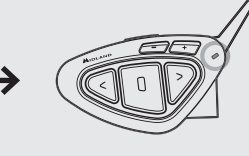


Press and hold 7 sec.



Press Vol+ or Vol- 3 seconds.

**Smartphone** If required, enter the PIN code (0000).



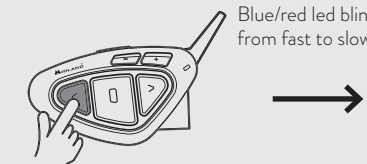
When pairing is complete, blue led lights up. 2 click on middle button to exit.

### UNIVERSAL INTERCOM WITH DIFFERENT BRAND UNIT

Power OFF



Press and hold 7 sec.



Press Forward 7 sec.

On the other intercom unit (not Midland) follow the procedure to pair to a phone.